

soreFix®

EN Carefully read the information leaflet before using SoreFix Rescue cold sore cream, even if you have used this product before. The information may have been updated since you last used SoreFix. Store this information leaflet for future reference.

Cream for the treatment of cold sores in all 4 phases

4 in 1

SoreFix Rescue cold sore cream is a unique solution with proven efficacy in all 4 phases of a cold sore. SoreFix Rescue cold sore cream is intended to form a protective moisture barrier to hydrate and protect the lips from external environmental factors and relieves the tingle (itch), reduces blisters, shortens healing time and prevents the scab from cracking (see figure "All phases technology"). SoreFix Rescue cold sore cream contains a sun protection factor (SPF 30) and is a transparent cream to not accentuate the cold sore.

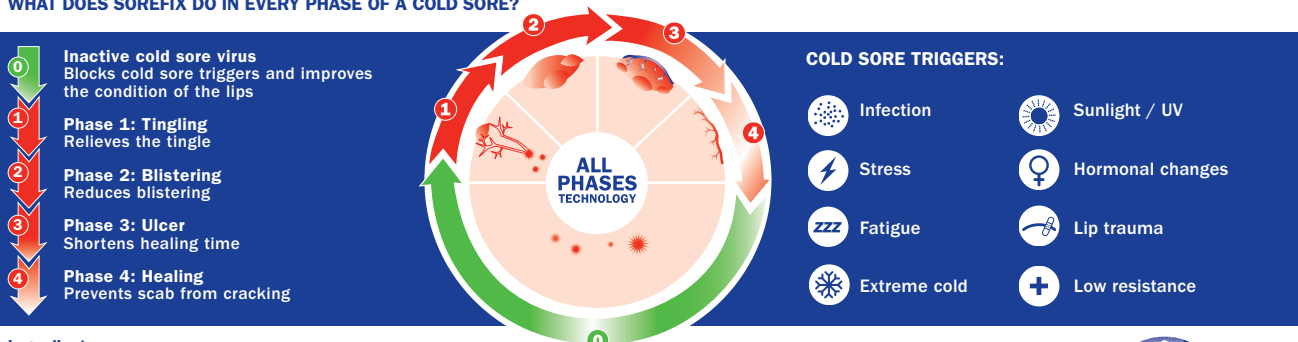
Dosage and use:

For optimal results during treatment, apply the cream 3-6 times a day to the affected area on the lips to avoid spreading of the cold sore. SoreFix Rescue cold sore cream can be safely used during the whole cold sore outbreak, from the initial tingle till the scab has fallen off and the cold sore is completely healed. It is advised to always wash your hands before and after application to prevent contamination. When using lipstick, apply SoreFix Rescue at least 15 minutes in advance.

The cream is free of sulphates, free of polyethylene glycols, TEA's, DEA's, parabens and other preservatives.

If a serious incident has occurred in relation to the product, report to the manufacturer mentioned on the leaflet and the competent authority in your country.

WHAT DOES SOREFIX DO IN EVERY PHASE OF A COLD SORE?



Ingredients:

Isostearyl isostearate (46%), jojoba oil (12%), hydrogenated styrene/isoprene copolymer, ethylhexyl methoxycinnamate (8%), PEG-8 beeswax, octocrylene (6%), diethylamino hydroxybenzoyl hexyl benzoate (3%), zinc oxide (2.2%), zinc ricinoleate, aluminum starch octenylsuccinate, sucrose tetrastearate triacetate, parfum, tocopheryl acetate, butyrospermum parkii (shea) butter, hydrogenated styrene/butadiene copolymer, cera microcrystallina, pomegranate oil, triethoxycaprylylsilane.

LOT Lot number and expiration date: see box & tube
When the treatment is complete dispose of tube, leaflet and carton as with any common urban waste. Consider the environment and recycle.

MD Medical Device

14 Single patient, multiple use
Keep tube away from sunlight.

15°C - 25°C

Keep out of reach of children.

Also available:

- SoreFix Prevent lip balm
- SoreFix Duo Patch



For more information www.sorefix.com

Distributor
(Name)
(Address)
(Telephone)
(Mail)

Manufacturer
Serrix BV
Herengracht 458,
1017 CA, Amsterdam,
The Netherlands

CE 1639

Leaflet last updated: April 2023

L044EG100